

ILULA LEVER BLOCKS

These units are of lightweight but robust construction, manufactured in accordance with ISO 9002 certified quality system standards. They comply with EC Council Directive 89/37/EC Machinery, ASME B30, AS1418.2.

SPECIAL FEATURES:

- Extra-thick asbestos-free friction plates.
- Double pawl braking system.
- Lipped hooks, providing extra safety.
- Time-saving rapid free-wheeling system.
- Unique holding system, ensuring that chain cannot free-wheel under load in the event of neutral being accidentally engaged.

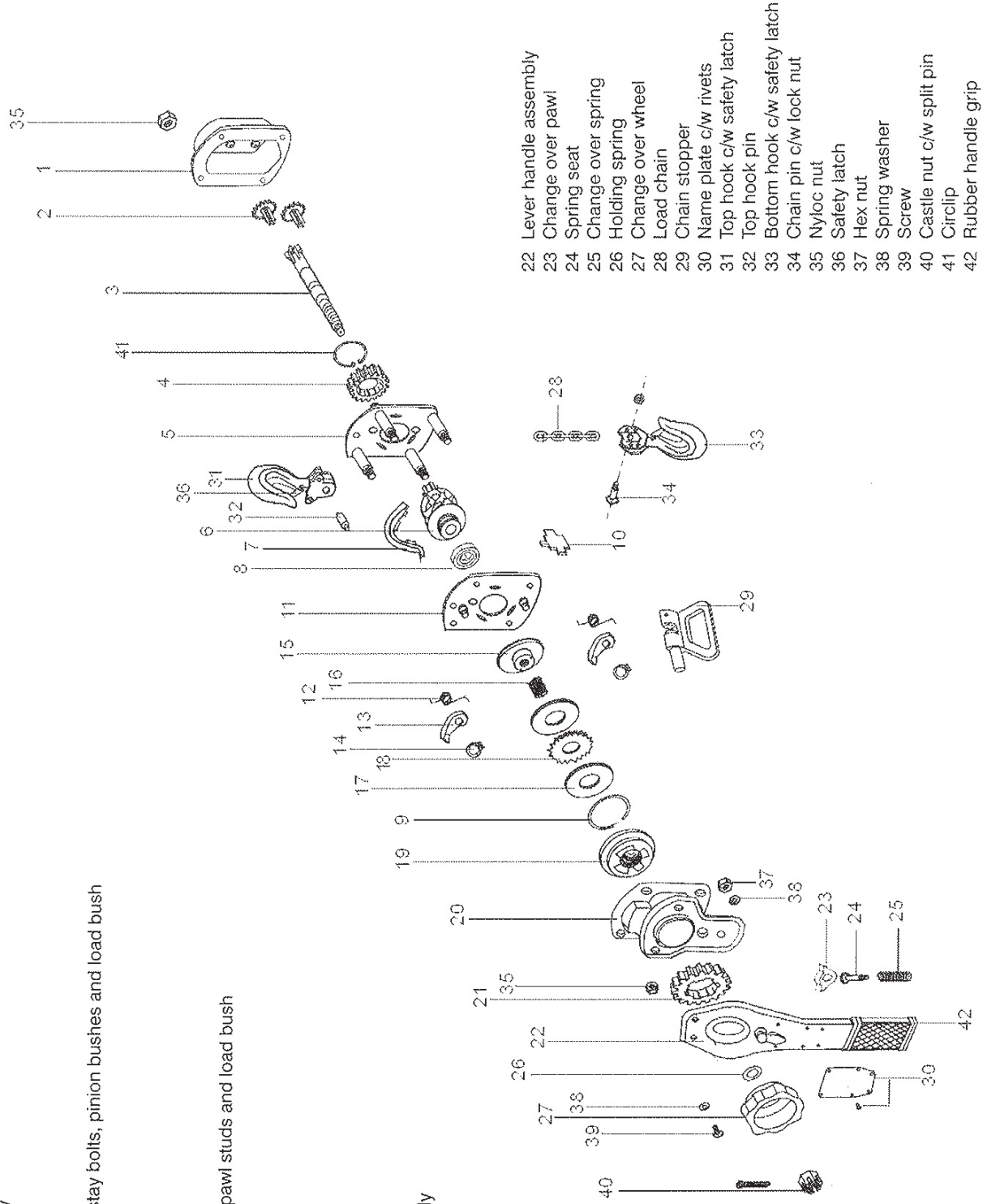


SPECIFICATIONS

Model	Capacity (ton)	Load chain falls	Levering effort (kg)	Drawn-up height (mm)	Weight c/w 3M pull (kg)
LHA075	0,75	1	14	325	8
LHA150	1,5	1	22	380	13
LHA300	3,0	1	32	480	22
LHA600	6,0	2	34	620	36
LHA900	9,0	3	36	700	53

SEE OVERLEAF FOR PARTS LIST

- 1 Gear cover assembly
- 2 Disc gear assembly
- 3 Pinion shaft
- 4 Splined gear
- 5 Gear side plate c/w stay bolts, pinion bushes and load bush
- 6 Load sheave
- 7 Chain guide
- 8 Bearing
- 9 Snap ring
- 10 Stripper
- 11 Lever side plate c/w pawl studs and load bush
- 12 Pawl spring
- 13 Pawl
- 14 Circlip
- 15 Hub
- 16 Free spring
- 17 Friction plate
- 18 Ratchet disc
- 19 Female thread grip
- 20 Brake cover assembly
- 21 Change over gear



- 22 Lever handle assembly
- 23 Change over pawl
- 24 Spring seat
- 25 Change over spring
- 26 Holding spring
- 27 Change over wheel
- 28 Load chain
- 29 Chain stopper
- 30 Name plate c/w rivets
- 31 Top hook c/w safety latch
- 32 Top hook pin
- 33 Bottom hook c/w safety latch
- 34 Chain pin c/w lock nut
- 35 Nyloc nut
- 36 Safety latch
- 37 Hex nut
- 38 Spring washer
- 39 Screw
- 40 Castle nut c/w split pin
- 41 Circlip
- 42 Rubber handle grip